

Mountain Lakes Public Schools

Referendum: April 2017

Welcome & Introductions

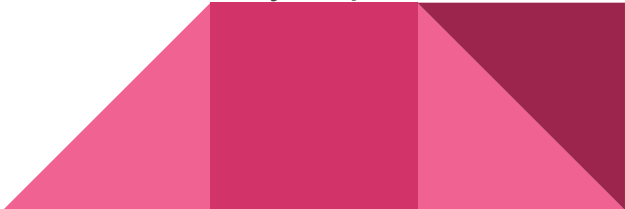
Dr. Anne Mucci, Superintendent of Schools

Ms. Elena Goldthwaite: President, Board of Education; Member of the Long Term Planning Committee; Co Chair Briarcliff Referendum Steering Committee

Mr. Jack Gentul: Vice President, Board of Education; Member of the Long Term Planning Committee; Co Chair Alumni & Corporate Giving Referendum Steering Committee

Mr. John Kaplan: Chair of Finance Committee of the Board of Education; Member of the Long Term Planning Committee; Co Chair of the Community Impact Referendum Steering Committee

Ms. Julie Shephard: Member of the Board of Education; Member of Community Impact Referendum Steering Committee



Rationale for the Proposed Referendum

Demographics of the communities of Mountain Lakes and Boonton Township

Aging facilities

Absence of dedicated spaces for 21st Century Learning, the Arts and Athletic Programs

Inability to create the optimal master schedule in each building

Maintaining standards of educational excellence



Overview of Proposed Improvements at MLHS

14 new classrooms and offices for the Board of Education

Renovated Auditorium

Creation of a Mini Auditorium

Renovation of the Choir Room and Vocal Music Performance Space

Renovation and Expansion of the Cafeteria and Kitchen

School Security Improvements

Removal of all temporary classrooms and trailers



Overview of Proposed Improvements at Briarcliff

School security improvements including relocation of the main office

Renovation of both girls and boys locker rooms; conversion of some of that space for instructional space

Air conditioning the gymnasium

Addition of a two story Arts Annex at the rear of the auditorium/gym

Renovation and expansion of the cafeteria and kitchen



Overview of Proposed Improvements at Wildwood

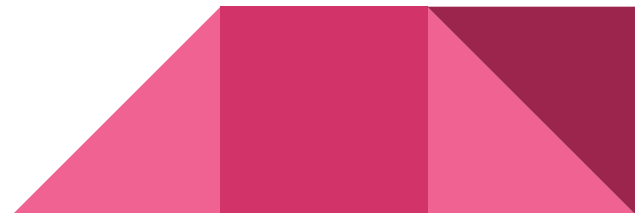
School security improvements including expansion of the main office

Renovation and expansion of the cafeteria and kitchen

Relocation of the library and renovation, computer lab and creation of an interior hallway to improve the effective use of all common learning spaces

Addition of a two story Arts Annex at the Kenilworth road rear entrance

Improvements to drop off and traffic flow patterns



Creation of the Health and Wellness Center

Male and female locker rooms to accommodate 5 sports each year

Two classrooms/team meeting rooms

Cardio and weight training room

Public restrooms

Meeting spaces for coaches, parents and college recruiters



Where can I learn more details and costs?

<http://mlschools.org/Referendum>

An overview of site plans, Q & A and public presentations

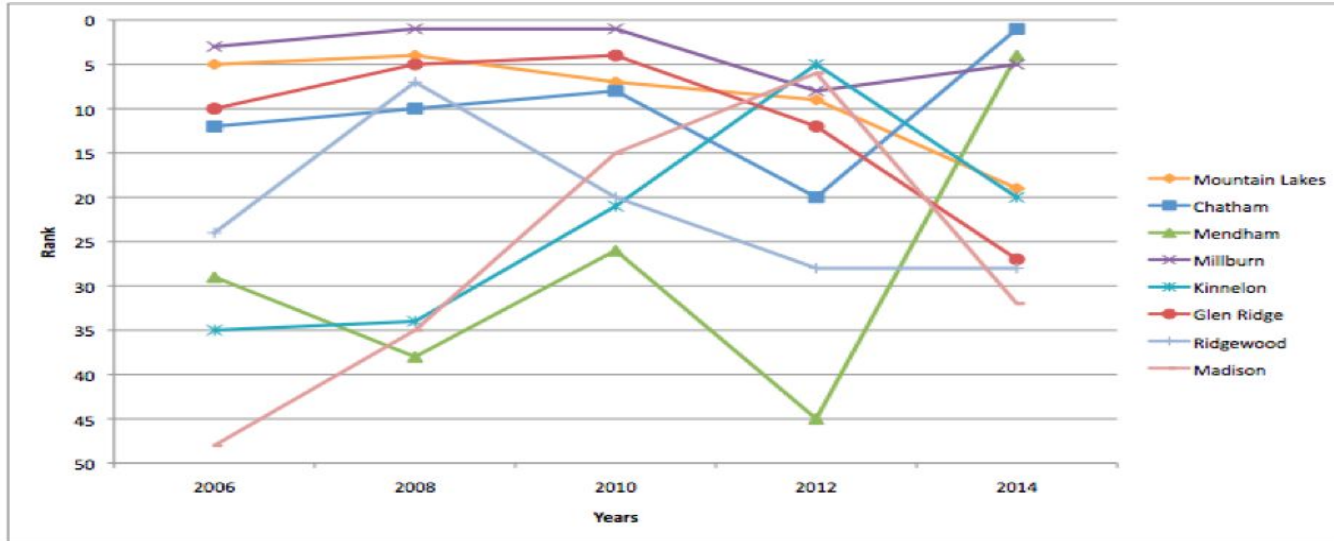
<http://mlschools.org/ReferendumSurvey>

A full survey detailing each project and cost



Property Values, Tax Rates and Rankings....

NJ Monthly Rankings - Select High Schools



	2006	2008	2010	2012	2014	Average	STD Dev	Grade 12 Enrollment 2014
Mountain Lakes	5	4	7	9	19	9	5.4	177
Chatham	12	10	8	20	1	10	6.1	280
Mendham	29	38	26	45	4	28	13.9	372
Millburn	3	1	1	8	5	4	2.7	352
Kinnelon	35	34	21	5	20	23	11.0	166
Glen Ridge	10	5	4	12	27	12	8.3	138
Ridgewood	24	7	20	28	28	21	7.8	406
Madison	48	35	15	6	32	27	14.9	170



Questions and Suggestions